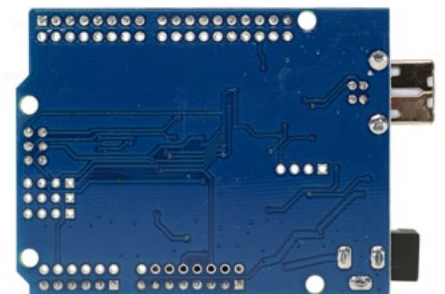
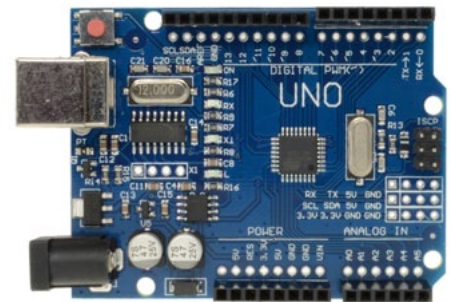


ARD 2 **Arduino Compatibles** Controllers, Shields, Modules & Sensors

Uno R3 Development Board

ARD2-0066

- **RESET circuit with improved stability**
- **Faster transfer rates and more memory**



Description

The Arduino Compatible UNO R3 2012 launched an easy way to use open-source controller hardware with no major changes. The main difference lies in that the USB to serial part of the circuit switch is an ATmega328P microcontroller, but the software part is the same as before.

In addition to all the features of the previous board, the Uno now uses an ATmega16U2 instead of the 8U2 found on the Uno (or the FTDI found on previous generations). This allows for faster transfer rates and more memory. No drivers needed for Linux or Mac (inf file for Windows is needed and included in the Arduino IDE), and the ability to have the Uno show up as a keyboard, mouse, joystick, etc.

Specifications

Microcontroller	ATmega328
Operating Voltage (logic level)	5V
Input Voltage (recommended)	7–12V
Input Voltage (limits)	6–20V
Digital I/O Pins	14 (of which 6 provide PWM output)
Analog Input Pins	6
DC Current per I/O Pin	40mA
DC Current for 3.3V Pin	50mA
Flash Memory	32KB (0.5KB is used by bootloader)
SRAM	2KB
EEPROM	1KB
Clock Speed	16mHz
Dimensions	33mm x 17.8mm